



Life cycle game

SLO: Students will be able to gain an understanding of the unique life cycle of the King salmon.

INTRODUCTION:

King salmon are anadromous – their life cycle takes place partly in fresh water and partly in sea water. The life cycle explored in this activity is based on King salmon farming.

WHAT YOU WILL NEED:

- Life cycle game activity sheet – 1 per group
- Life cycle card sheet – enough copies so there is at least one card per student
- Salmon life cycle poster

ONLINE VERSION:

kingsalmon.co.nz/ed/activity2

ACTIVITY:

Using the King salmon life cycle poster and game cards, students work together in groups to arrange the cards into the life cycle of a farmed King salmon.



ACTIVITY SHEET

Life cycle game

Using the King salmon life cycle poster and game cards, work together in groups to arrange the cards into the life cycle of a farmed King salmon using one of the activities below.

1. In order

Using one set of cards for each of five groups:

- Hand a card out to each member of the group.
- Ask them to read their cards to themselves and be ready to tell their group what it is about.
- Start with the student who has the Ova card.
They lie down their card and tell their group what it is about.
- The student who has the card with the next step in the life cycle, places their card down and says what it is about.
- Carry on until all cards are down.

2. Group work

Using one set of cards for each group students to work together and make the life cycle - refer to poster for help.

3. Finding the same

Using all the sets of cards:

- Hand a card out to each member of the class.
- Without talking, find other members in the class with the same card.
- Once finding everyone in your group, sit down and read the card and talk about it.
- One member from each group shares their card with the class.
- Start with the group that has the Ova card and follow the life cycle in order.

CARD SHEET

Life cycle game

Ensure there is at least one card per student.
Cut out the cards along the lines below



Farmed King salmon life cycle

ALEVIN

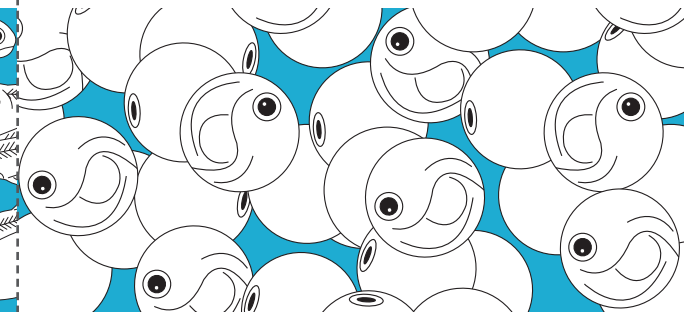
Alevin are hatched from eggs at the freshwater hatchery



Farmed King salmon life cycle

OVA

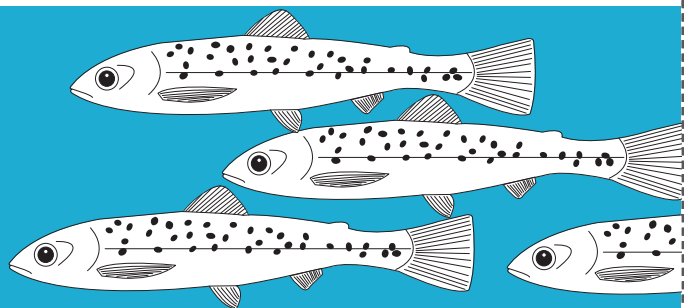
Ova or eggs are collected at the freshwater hatchery



Farmed King salmon life cycle

SMOLT

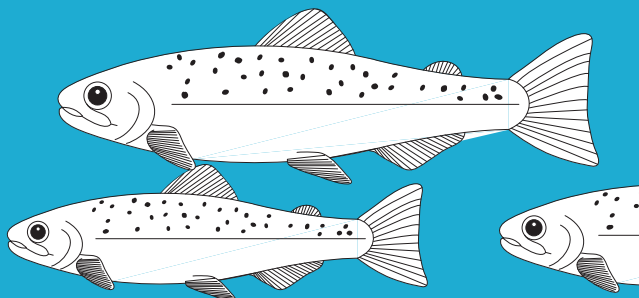
At around 100g smolt are transferred to net pens at the sea farms



Farmed King salmon life cycle

ADULTS

Adult King salmon reach harvest size of 4kg in net pens at the sea farms (around 12-18 months)



Farmed King salmon life cycle

FRY

Fry are transferred to outside raceways at the freshwater hatchery

